

Fusion Middleware Configuration Wizard - Page 3 of 12

**Application Location**

ORACLE  
FUSION MIDDLEWARE

- Create Domain
- Templates
- Application Location**
- Administrator Account
- Domain Mode and JDK
- Database Configuration Type
- Component Datasources
- JDBC Test
- Advanced Configuration
- Configuration Summary
- Configuration Progress
- End Of Configuration

Domain name: SPARreport

Domain location: D:\oracle\fmw\user\_projects\domains

Application location:

Help < Back Next > Finish Cancel

Fusion Middleware Configuration Wizard - Page 4 of 12

**Administrator Account**

ORACLE  
FUSION MIDDLEWARE

- Create Domain
- Templates
- Application Location
- Administrator Account**
- Domain Mode and JDK
- Database Configuration Type
- Component Datasources
- JDBC Test
- Advanced Configuration
- Configuration Summary
- Configuration Progress
- End Of Configuration

Name:

Password:

Confirm Password:

Must be the same as the password. Password must contain at least 8 alphanumeric characters with at least one number or special character.

Help < Back Next > Finish Cancel

Fusion Middleware Configuration Wizard - Page 5 of 12

**Domain Mode and JDK**

ORACLE  
FUSION MIDDLEWARE

[Create Domain](#)  
[Templates](#)  
[Application Location](#)  
[Administrator Account](#)  
**Domain Mode and JDK**  
[Database Configuration Type](#)  
[Component Datasources](#)  
[JDBC Test](#)  
[Advanced Configuration](#)  
[Configuration Summary](#)  
[Configuration Progress](#)  
[End Of Configuration](#)

**Domain Mode**

Development  
 Utilize boot.properties for username and password, and poll for applications to deploy.

Production  
 Require the entry of a username and password, and do not poll for applications to deploy.

**JDK**

Oracle HotSpot 1.8.0\_152 D:\Java\jdk1.8.0\_152

Other JDK Location:

Fusion Middleware Configuration Wizard - Page 6 of 12

**Database Configuration Type**

ORACLE  
FUSION MIDDLEWARE

[Create Domain](#)  
[Templates](#)  
[Application Location](#)  
[Administrator Account](#)  
[Domain Mode and JDK](#)  
**Database Configuration Type**  
[Component Datasources](#)  
[JDBC Test](#)  
[Advanced Configuration](#)  
[Configuration Summary](#)  
[Configuration Progress](#)  
[End Of Configuration](#)

Specify AutoConfiguration Options Using:

RCU Data
  Manual Configuration

Enter the database connection details using the schema credentials corresponding to Common Infrastructure Services component in the Repository Creation Utility. The Wizard uses this connection to automatically configure the datasources required for components in this domain.

Vendor:  Driver:

Connection Parameters
  Connection URL String

Host Name:

DBMS/Service:  Port:

Schema Owner:  Schema Password:

Connection Result Log

Successfully Done.

Click "Next" button to continue.

Fusion Middleware Configuration Wizard - Page 7 of 12

### JDBC Component Schema

ORACLE FUSION MIDDLEWARE

Vendor:  Driver:

Connection Parameters  Connection URL String

Host Name:

DBMS/Service:  Port:

Schema Owner:  Schema Password:

Oracle RAC configuration for component schemas:  
 Convert to GridLink  Convert to RAC multi data source  Don't convert

Edits to the data above will affect all checked rows in the table below.

<input type="checkbox"/>	Component Schema	DBMS/Service	Host Name	Port	Schema Owner	Schema Password
<input type="checkbox"/>	LocalSvcTbl Schema	GPI	10.10.10.1	1521	SPAREPORT_ST	*****
<input type="checkbox"/>	WLS Schema	GPI	10.10.10.1	1521	SPAREPORT_W	*****
<input type="checkbox"/>	OPSS Audit Schema	GPI	10.10.10.1	1521	SPAREPORT_IA	*****
<input type="checkbox"/>	OPSS Audit Viewer Schem	GPI	10.10.10.1	1521	SPAREPORT_IA	*****
<input type="checkbox"/>	OPSS Schema	GPI	10.10.10.1	1521	SPAREPORT_Of	*****

Help < Back Next > Finish Cancel

Fusion Middleware Configuration Wizard - Page 8 of 12

### JDBC Component Schema Test

ORACLE FUSION MIDDLEWARE

<input checked="" type="checkbox"/>	Status	Component Schema	JDBC Connection URL
<input checked="" type="checkbox"/>	✓	LocalSvcTbl Schema	jdbc:oracle:thin:@//10.10.10.1:1521/GPI
<input checked="" type="checkbox"/>	✓	WLS Schema	jdbc:oracle:thin:@//10.10.10.1:1521/GPI
<input checked="" type="checkbox"/>	✓	OPSS Audit Schema	jdbc:oracle:thin:@//10.10.10.1:1521/GPI
<input checked="" type="checkbox"/>	✓	OPSS Audit Viewer Schema	jdbc:oracle:thin:@//10.10.10.1:1521/GPI
<input checked="" type="checkbox"/>	✓	OPSS Schema	jdbc:oracle:thin:@//10.10.10.1:1521/GPI

Test Selected Connections Cancel Testing

Connection Result Log

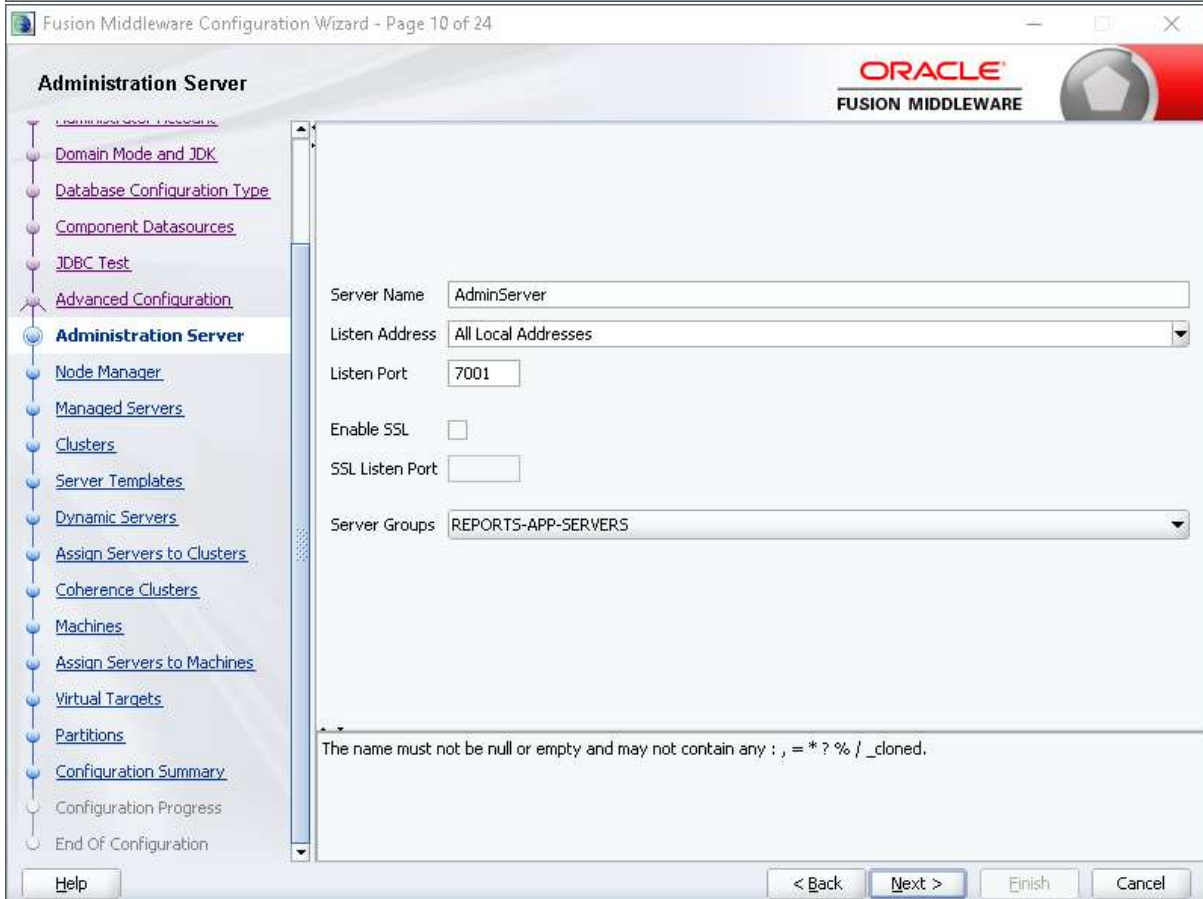
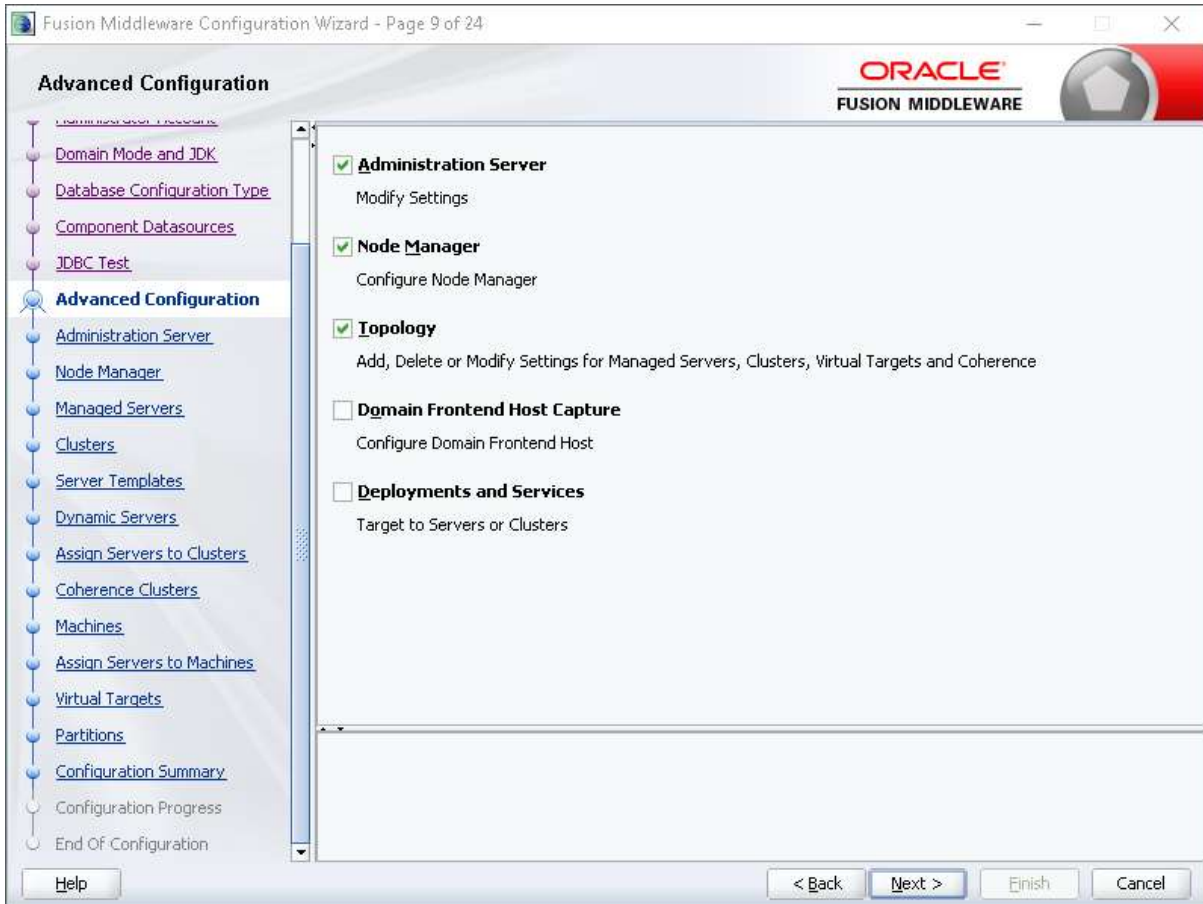
```

Component Schema=LocalSvcTbl Schema
Driver=oracle.jdbc.OracleDriver
URL=jdbc:oracle:thin:@//10.10.10.1:1521/GPI
User=SPAREPORT_STB
Password=*****
SQL Test=SELECT 1 FROM DUAL

CFGFWK-64213: Test Successful!
CFGFWK-64213: JDBC connection test was successful
    
```

Help < Back Next > Finish Cancel





Fusion Middleware Configuration Wizard - Page 11 of 24

**Node Manager**

ORACLE  
FUSION MIDDLEWARE

Per Domain Default Location  
 Per Domain Custom Location  
 Node Manager Home:    
 Manual Node Manager Setup

**Node Manager Credentials**

Username:   
 Password:   
 Confirm Password:

Must be the same as the password. Password must contain at least 8 alphanumeric characters with at least one number or special character.

Fusion Middleware Configuration Wizard - Page 12 of 24

**Managed Servers**

ORACLE  
FUSION MIDDLEWARE

Server Name	Listen Address	Listen Port	Enable SSL	SSL Listen Port	Server Groups
WLS_REPORTS	All Local Addresses	9002	<input type="checkbox"/>	Disabled	REPORTS-...

Fusion Middleware Configuration Wizard - Page 13 of 24

**ORACLE**  
FUSION MIDDLEWARE

**Clusters**

+ Add    X Delete    Discard Changes

Cluster Name	Cluster Address	Frontend Host	Frontend HTTP Port	Frontend HTTPS Port	Dynamic Server Groups
cluster_reports			0	0	Unspecified

Help    < Back    Next >    Finish    Cancel

Fusion Middleware Configuration Wizard - Page 14 of 24

**ORACLE**  
FUSION MIDDLEWARE

**Server Templates**

+ Add    X Delete    Discard Changes

Name	Listen Port	SSL Listen Port	Enable SSL
			<input type="checkbox"/>

Help    < Back    Next >    Finish    Cancel

Fusion Middleware Configuration Wizard - Page 15 of 24

**Dynamic Servers**

ORACLE  
FUSION MIDDLEWARE

Disard Changes

Cluster Name	Server Name Prefix	Server Template	Dynamic Cluster Size	Machine Name Match Expression	Calculated Machine Names	Calculated Listen Ports	Dynamic Cluster
cluster_repor	Disabled	Unspecified	Disabled	Disabled	<input type="checkbox"/>	<input type="checkbox"/>	<input type="checkbox"/>

Help < Back Next > Finish Cancel

Fusion Middleware Configuration Wizard - Page 16 of 24

**Assign Servers to Clusters**

ORACLE  
FUSION MIDDLEWARE

Servers

Clusters

- Cluster
  - cluster\_reports
    - Server
      - WLS\_REPORTS

Select **one or more** servers in the left pane and **one** cluster in the right pane. Then use the right arrow button (>) to assign the server or servers to the cluster.

Help < Back Next > Finish Cancel



Fusion Middleware Configuration Wizard - Page 17 of 24

**Coherence Clusters**

ORACLE  
FUSION MIDDLEWARE

Disard Changes

Cluster Name	Cluster Listen Port
defaultCoherenceCluster	7574

Help < Back Next > Finish Cancel

Fusion Middleware Configuration Wizard - Page 18 of 24

**Machines**

ORACLE  
FUSION MIDDLEWARE

Machine: Unix Machine

+ Add X Delete Disard Changes

Name	Node Manager Listen Address	Node Manager Listen Port
AdminServerMachine	localhost	5556

Help < Back Next > Finish Cancel

